

SignalTight



■ **SignalTight® The continuity solution**

EX6XLPLUS



EX59XLPLUS






EX6SKXLPLUS



EX59SKXLPLUS



Product Specifications	
Bandwidth	0 MHz to 3 GHz
Impedance	75 Ohms (nominal)
Return Loss	Minimum -30 dB to 3 GHz
Insertion Loss	Less than .10 dB to 3 GHz
Operating Voltage	90 V (at 60 Hz continuous AC)
Operating Temperature	-40o F to + 140o F (-40o C to 60o C)
Cable Retention (Trishield)	70 lbs (31.75 kg) minimum
Meets or Exceeds all SCTE Specifications	

Part Number	Preparation & Installation Tools
EX6XLPLUS	SignalTight™, XL series, 6 series
EX59XLPLUS	SignalTight™, XL series, 59 series
EX6SKXLPLUS	SignalTight™, XL series, knurled nut, 6 series
EX59SKXLPLUS	SignalTight™, XL series, knurled nut, 59 series
	  

■ **SignalTight® Drop Jumpers The continuity solution**



Available with or without SimplEX® adapter

Product Specifications	
Bandwidth	0 MHz to 3 GHz
Impedance	75 Ohms (nominal)
Return Loss	Minimum -30 dB to 3 GHz
Insertion Loss	Less than .10 dB to 3 GHz
Operating Voltage	90 V (at 60 Hz continuous AC)
Operating Temperature	-40o F to + 140o F (-40o C to 60o C)
Cable Retention (Trishield)	70 lbs (20.41 kg) minimum
Meets or Exceeds all SCTE Specifications, Class A	

Part #	Description (Standard Length 1.5 meters)
JPLUS59ICT59SE-CS	SignalTight™ Jumper, 59 Series, Tri shield, Solid Copper CC, SimplEX® adapter, 59" (1.5 meters)
JPLUS6ICT59WSE-CS	SignalTight™ Jumper, 6 Series White, Tri shield, Solid Copper CC, SimplEX® adapter, 59" (1.5 meters)



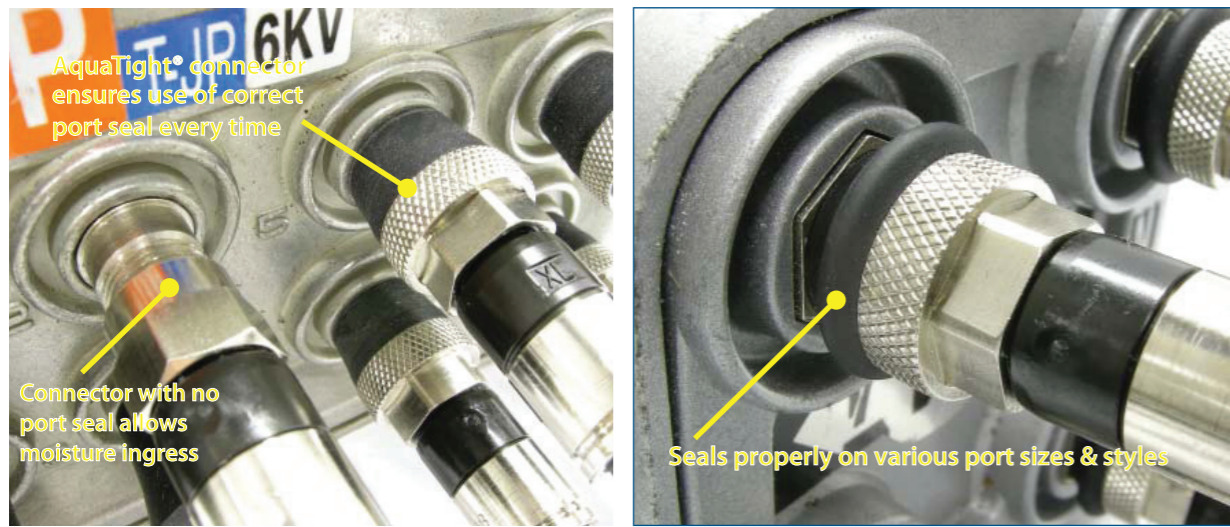
한국 공식 수입 총판
ESTECH
 INTERNATIONAL

경기도 의왕시 고천동 290-2 대영골든밸리 601호
 TEL : 031.450.6868 FAX : 031.450.6869
 SITE : www.es-tech.com



한국 공식 수입 총판
 경기도 의왕시 고천동 290-2 대영골든밸리 601호
 TEL : 031.450.6868 FAX : 031.450.6869
 SITE : www.es-tech.com





AquaTight® EX® Universal compression connectors ensure proper port sealing every time



AquaTight® EX® Universal compression connectors ensure proper port sealing every time
Right angle connectors prevent improper cable bending and tap ports from breaking in smaller pedestals

■ AquaTight® EX® Compression Connectors: Series 6 & 59



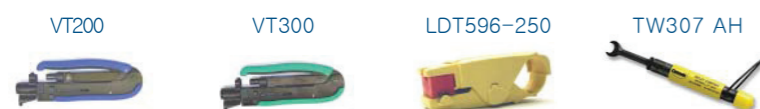
Product Specifications	
Bandwidth	0 MHz to 3 GHz
Impedance	75 Ohms (nominal)
Return Loss	Minimum -20 dB to 1 GHz
Insertion Loss	Less than .10 dB to 1.2 GHz
Operating Voltage	90 V (at 60 Hz continuous AC)
Operating Temperature	-40o F to + 140o F (-40o C to 60o C)
Cable Retention (Trishield)	175 lbs (20.41 kg) minimum

Meets or Exceeds all SCTE Specifications

Part Numbers

EX6WS	AquaTight® EX® connector, integrated port seal, series 6 cable
EX6XLWS	AquaTight® EX® connector, integrated port seal, extended body, series 6 cable
EX59WS	AquaTight® EX® connector, integrated port seal, series 59 cable
EX59XLWS	AquaTight® EX® connector, integrated port seal, extended body, series 59 cable

Preparation & Installation Tools



■ AquaTight® EX® Compression Connectors: Series 7 & 11



Product Specifications

Bandwidth	0 MHz to 3 GHz
Impedance	75 Ohms (nominal)
Return Loss	Minimum -30 dB to 3 GHz
Insertion Loss	Less than .10 dB to 3 GHz
Operating Voltage	90 V (at 60 Hz continuous AC)
Operating Temperature	-40o F to + 140o F (-40o C to 60o C)
Cable Retention (Trishield)	45 lbs (20.41 kg) minimum

Meets or Exceeds all SCTE Specifications

Part Numbers

EX7N716WS	AquaTight® EX® connector, integrated port seal, 7/16" hex nut, series 7 cable
EX11N716WS	AquaTight® EX® connector, integrated port seal, 7/16" hex nut, series 11 cable
EX11RAFMWS	AquaTight® EX® connector, integrated port seal, right angle, 9/16" hex nut, series 11 cable

Preparation & Installation Tools



■ AquaTight® EX Compression Connectors: Series 320QR



Product Specifications

Bandwidth	0 MHz to 3 GHz
Impedance	75 Ohms (nominal)
Return Loss	Minimum -30 dB to 3 GHz
Insertion Loss	Less than .10 dB to 3 GHz
Operating Voltage	90 V (at 60 Hz continuous AC)
Operating Temperature	-40o F to + 140o F (-40o C to 60o C)
Cable Retention (Trishield)	45 lbs (20.41 kg) minimum

Meets or Exceeds all SCTE Specifications

Part Numbers

EX320QRWS	AquaTight® EX® connector, integrated port seal, 9/16" hex nut, series 320QR cable
EX320RAFMWS	AquaTight® EX® connector, integrated port seal, right angle, 9/16" hex nut, series 320QR cable

Preparation & Installation Tools

